



## Cremorne Plaza, Cremorne NSW

**Architect:** EDAW

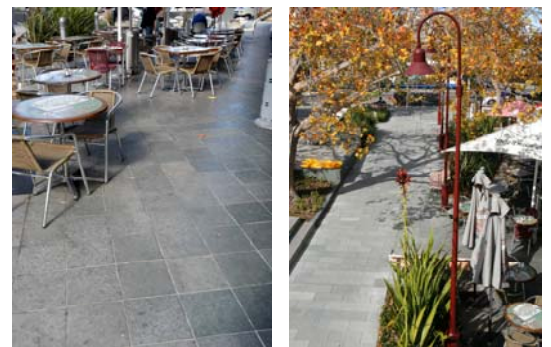
**Builder:** North Sydney Council

**Stone supplied for this project**

CINAJUS Kota Blue Limestone Natural 600 x 300 x 20mm

**Finishes available:** Natural

**Applications:** Internal & External Floors & Walls



**CINAJUS** Pty Ltd

ABN 86 089 623 487

**StoneFloors**  
&  
**StoneWalls**

32 Bryant Street, Padstow NSW 2211  
Tel: (02) 9773 5677 Fax: (02) 9773 5644

Email: [info@cinajus.com](mailto:info@cinajus.com)

Online catalogue: [www.cinajus.com](http://www.cinajus.com)